

INORDER®

STORAGE EQUIPMENT

PLACE THE GLOBE INORDER



INORDER®

INORDER® is a registered trademark.

Using our various kind of boxes & bins as organizers to Place The Globe INORDER®

- Place your warehouse in order
- Place your workshop in order
- Place your hospital in order
- Place your home in order

COMPANY INTRODUCTION

Qingdao Inorder Storage Equipment Co.,Ltd is a plastic organizer and storage solution supplier located in the beautiful coastal city Qingdao.

We have two factories in Jiaozhou and Chengyang district. The factories covered a total area of 20,000 square meters including 12,000 m² workshop, 4,000 m² warehouse and 1,200 m² office.

Total 32 injection machines from 80T to 2800T are in service and more machines are expanding. We also have some auxiliary machines such as welding machine, hot stamping machine, printing machine to offer customized service.

More than 200 sizes different bins, boxes and pallets are supplied by us to meet different customer requirement, Always you can find a suitable products for your storage and transportation.

Our business covered more than 40 countries such as USA, UK, Australia, Germany, Holland, Canada, Singapore, etc.



CUSTOMIZED SERVICE

● Special material customized service



ESD is a regular demand in electronic industry, we offer different electric conductivity customized service



We offer UL Standard FV-0, FV-1 and FV-2 flame-retardant special application customized service

● Logo, printing and labeling service



Engraving Logo



Silk Printing Logo



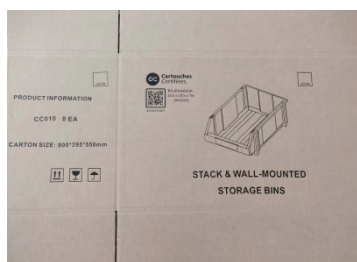
Hot Stamping



Thermal Transfer



Customized Color

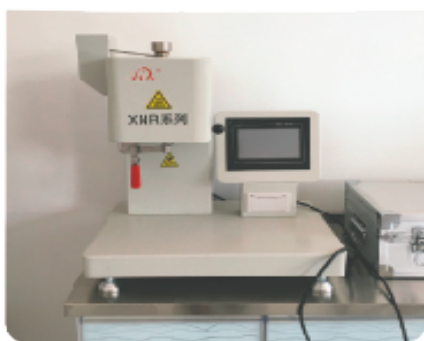
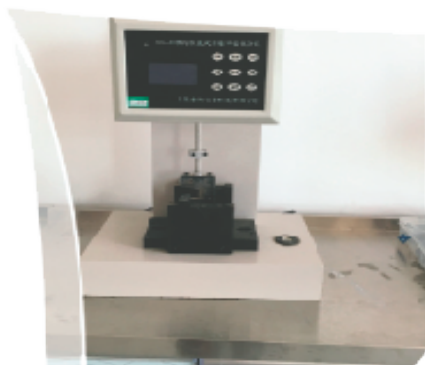


Customized Packing



OEM Service

TESTING EQUIPMENT



PLASTIC STORAGE BOXES

Automation Storage Boxes P1-P6



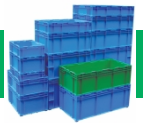
Attached Lids Boxes P7-P8



EU Standard Boxes P9-P12



HP Standard Boxes P13-P14



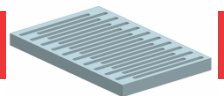
Foldable Storage Boxes P15-P16



Stack and Nest Boxes P17



Dividers and Inlays P18



Dolly for Plastic Boxes P19-P20



TABLE OF CONTENTS

PLASTIC STORAGE BINS



Stackable Storage Bins P21-P25



Shelf Storage Bins P26-P28



European Shelf Trays P29-P31



Bin Picking Rack P32-P33



Bin Cabinet P34

Plastic Pallets

Stackable Pallet Boxes P35



Foldable Pallet Boxes P36-P38



Plastic Pallets P39-P40



Automation Storage Boxes

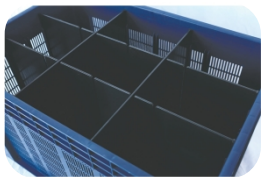


Automation Storage Boxes are widely used in different kinds of warehouse automation solutions such as mini-load, high bay robotics, shuttle racking etc. It is also widely used in different industries such as 3C, clothes, medicine, e-commerce, etc.

Regular Color: ● ●

Customization:  

Design Highlights



Vented wall design

- Suitable for fire controlling requirement



Honeycomb , textured, and welded bottom design

- Double reduced bottom deflection;
- Smooth running on both belt or roller conveyor;
- Suitable for all kind of sorters



Double wall & round corner design

- More stronger to prevent damaging
- Keep smooth running when turning directions on the conveyor



Gentle Slope

- Reduce hitting noise when pulling out the box from the rack by robot



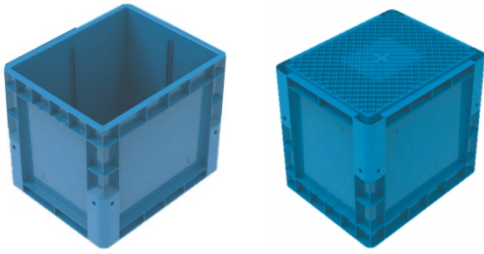
Locked Dividers

- Prevent dividers sliding out during high speed running one the roller conveyor



Lable Design

- We use Bartender software to design different formats barcodes or QR codes;
- We offer waterproof, oil resistant and scratch resistant PP or PET labels.

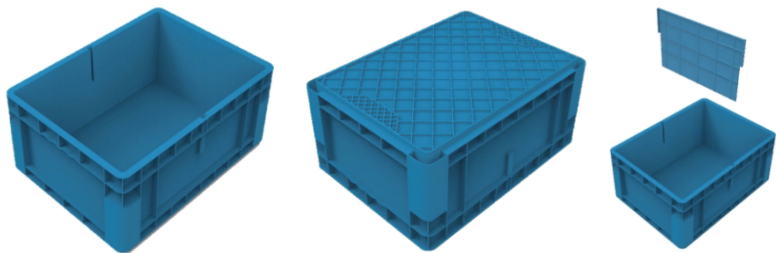
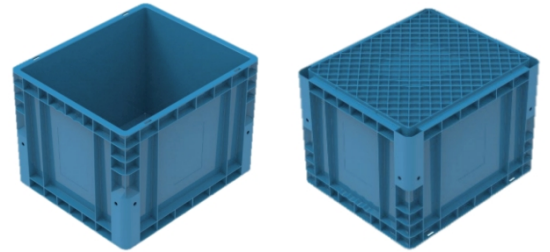


TK4234-36C

- External Size: 420×340×360mm
- Internal Size: 383×303×351mm
- Load Capacity: ≤30kg
- Volume: 39L
- Material: High Impact PP
- Stacking Load: ≤150kg

TK4740-35C

- External Size: 470×400×350mm
- Internal Size: 437×364×337mm
- Load Capacity: ≤30kg
- Volume: 53L
- Material: High Impact PP
- Stacking Load: ≤150kg

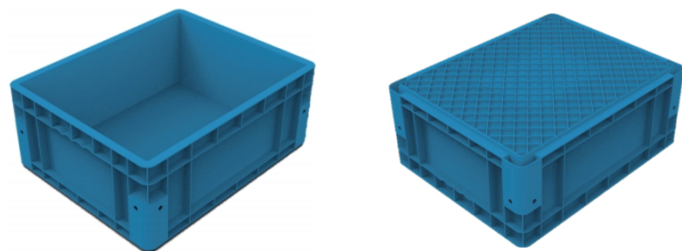
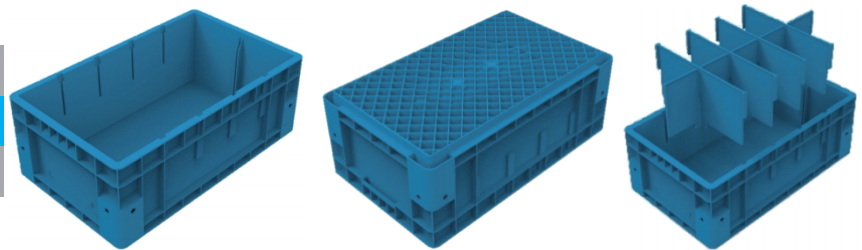


TK4835-22

- External Size: 480×350×220mm
- Internal Size: 442×318×213mm
- Load Capacity: ≤30kg
- Volume: 28L
- Material: High Impact PP
- Stacking Load: ≤150kg

TK5030-19

- External Size: 500×300×190mm
- Internal Size: 469×267×172mm
- Load Capacity: ≤30kg
- Volume: 22L
- Material: High Impact PP
- Stacking Load: ≤150kg

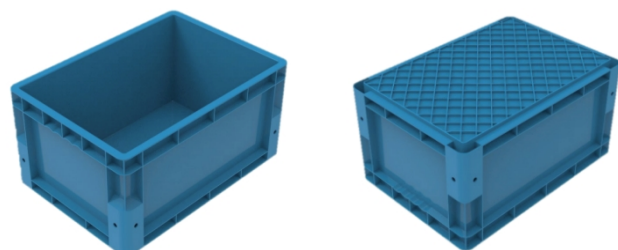
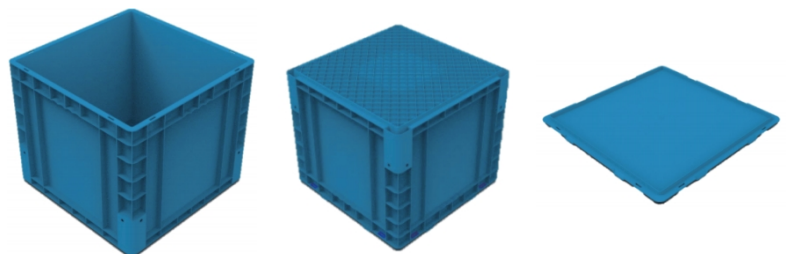


TK5040-20

- External Size: 500×400×200mm
- Internal Size: 467×367×191mm
- Load Capacity: ≤30kg
- Volume: 32L
- Material: High Impact PP
- Stacking Load: ≤150kg

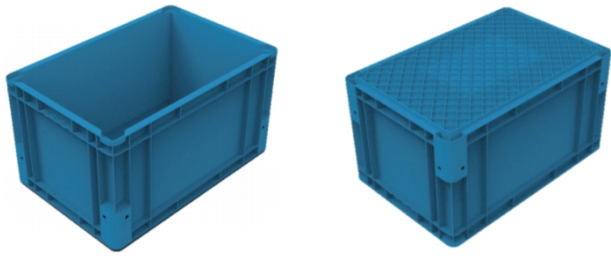
TK5050-43

- External Size: 500×500×430mm
- Internal Size: 465×465×420mm
- Load Capacity: ≤30kg
- Volume: 90L
- Material: High Impact PP
- Stacking Load: ≤150kg



TK5136-26C

- External Size: 510×360×260mm
- Internal Size: 474×324×251mm
- Load Capacity: ≤30kg
- Volume: 37L
- Material: High Impact PP
- Stacking Load: ≤150kg

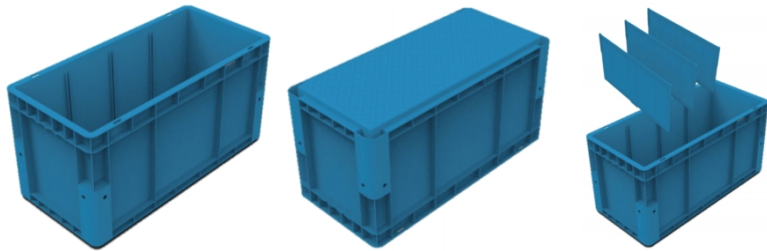
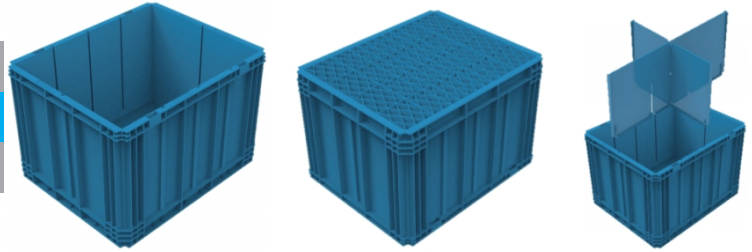


TK5536-30

- External Size: 550×365×300mm
- Internal Size: 516×331×290mm
- Load Capacity: ≤30kg
- Volume: 45L
- Material: High Impact PP
- Stacking Load: ≤150kg

TK5747-38

- External Size: 572×467×380mm
- Internal Size: 530×425×362mm
- Load Capacity: ≤30kg
- Volume: 80L
- Material: High Impact PP
- Stacking Load: ≤150kg

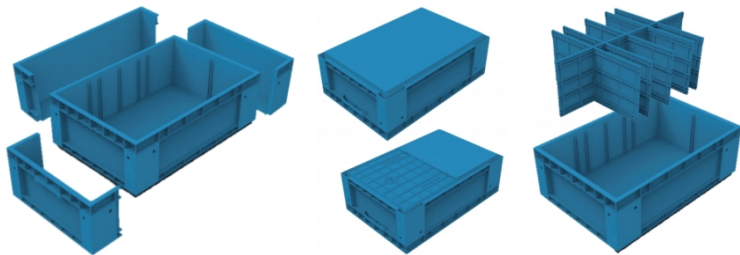
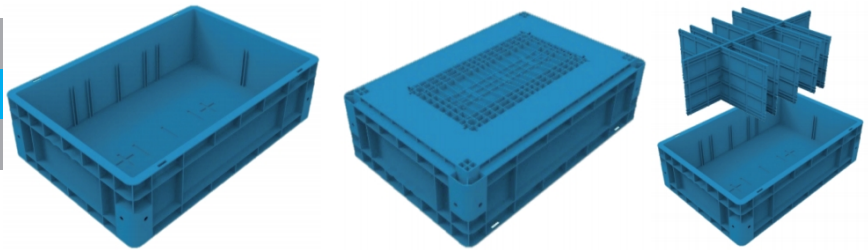


TK6028-30

- External Size: 600×280×300mm
- Internal Size: 566×245×297mm
- Load Capacity: ≤30kg
- Volume: 40L
- Material: High Impact PP
- Stacking Load: ≤150kg

TK6040-18

- External Size: 600×400×175mm
- Internal Size: 564×364×160mm
- Load Capacity: ≤30kg
- Volume: 30L
- Material: High Impact PP
- Stacking Load: ≤150kg

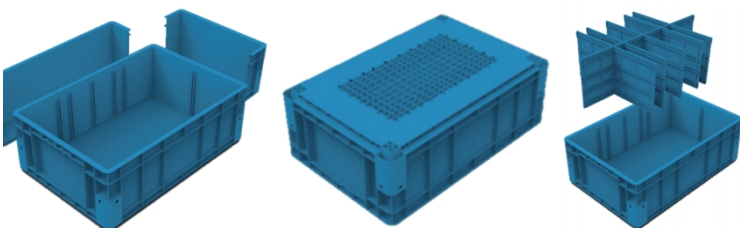
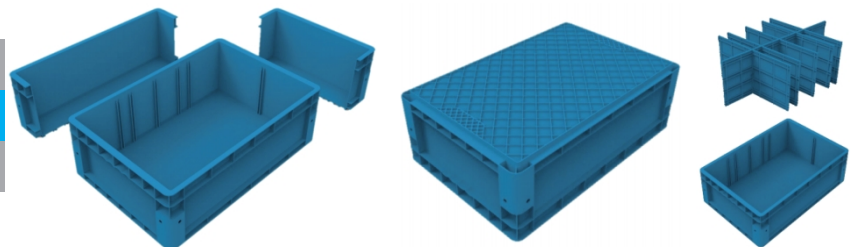


TK6040-20B

- External Size: 600×400×205mm
- Internal Size: 567×367×190mm
- Load Capacity: ≤30kg
- Volume: 38L
- Material: High Impact PP
- Stacking Load: ≤150kg

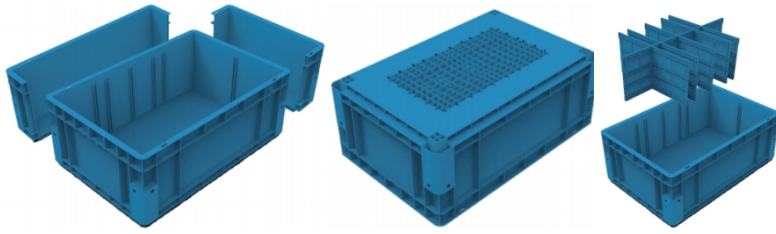
TK6040-20C

- External Size: 600×400×205mm
- Internal Size: 567×367×190mm
- Load Capacity: ≤30kg
- Volume: 38L
- Material: High Impact PP
- Stacking Load: ≤150kg



TK6040-20D

- External Size: 600×400×205mm
- Internal Size: 567×367×190mm
- Load Capacity: ≤50kg
- Volume: 38L
- Material: High Impact PP
- Stacking Load: ≤250kg

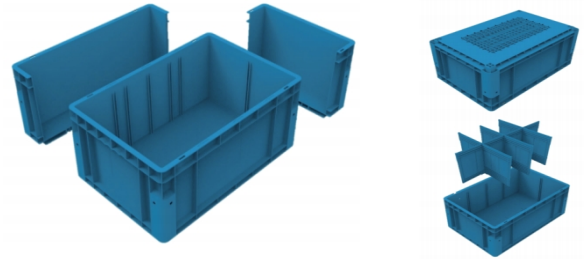


TK6040-23

- External Size: 600×400×230mm
- Volume: 40L
- Internal Size: 564×364×213mm
- Material: High Impact PP
- Load Capacity: ≤40kg
- Stacking Load: ≤200kg

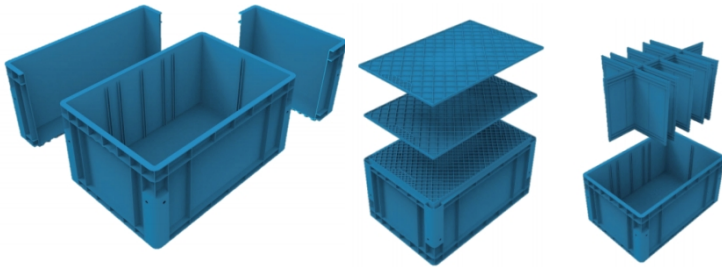
TK6040-28

- External Size: 600×400×280mm
- Volume: 47L
- Internal Size: 567×367×261mm
- Material: High Impact PP
- Load Capacity: ≤50kg
- Stacking Load: ≤250kg



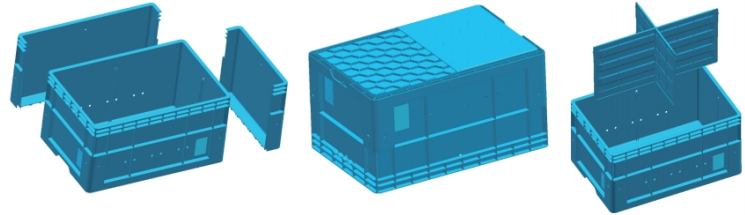
TK6040-30

- External Size: 600×400×300mm
- Volume: 54L
- Internal Size: 566×366×293mm
- Material: High Impact PP
- Load Capacity: ≤50kg
- Stacking Load: ≤250kg



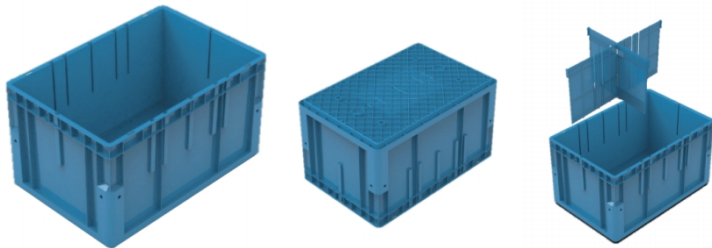
TK6040-32

- External Size: 600×400×320mm
- Volume: 62L
- Internal Size: 565×365×304mm
- Material: High Impact PP
- Load Capacity: ≤50kg
- Stacking Load: ≤250kg



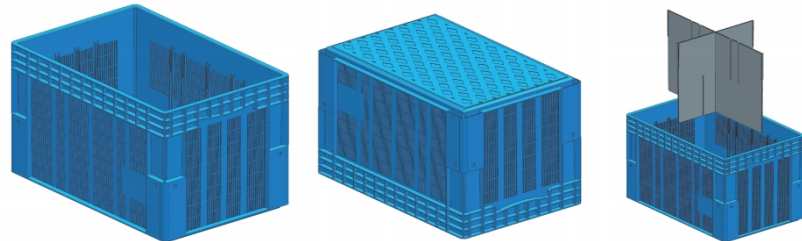
TK6040-34C

- External Size: 600×400×340mm
- Volume: 70L
- Internal Size: 571×371×325mm
- Material: High Impact PP
- Load Capacity: ≤50kg
- Stacking Load: ≤250kg



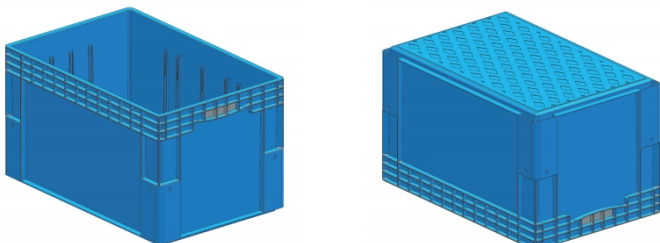
TK6040-35A

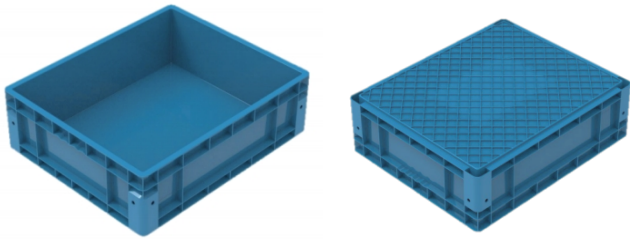
- External Size: 600×400×350mm
- Volume: 71L
- Internal Size: 565×365×345mm
- Material: High Impact PP
- Load Capacity: ≤30kg
- Stacking Load: ≤150kg



TK6040-35B

- External Size: 600×400×350mm
- Volume: 71L
- Internal Size: 565×365×345mm
- Material: High Impact PP
- Load Capacity: ≤30kg
- Stacking Load: ≤150kg



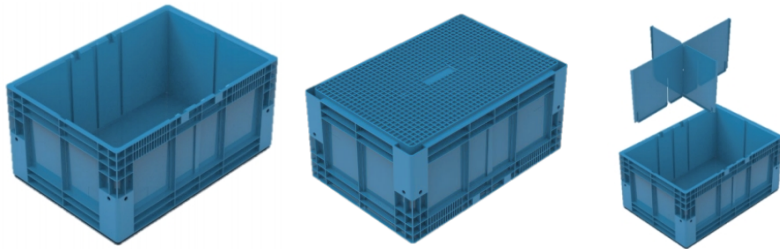
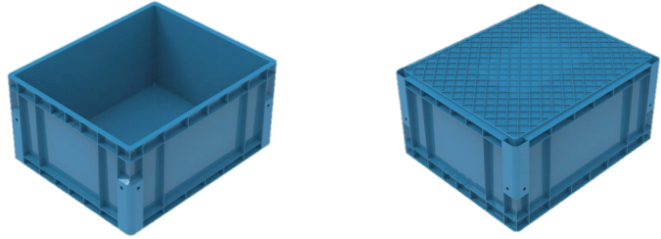


TK6050-18C

- External Size: 600×500×185mm
- Internal Size: 566×466×176mm
- Load Capacity: ≤30kg
- Volume: 46L
- Material: High Impact PP
- Stacking Load: ≤150kg

TK6050-30C

- External Size: 600×500×300mm
- Internal Size: 566×466×291mm
- Load Capacity: ≤30kg
- Volume: 76L
- Material: High Impact PP
- Stacking Load: ≤150kg

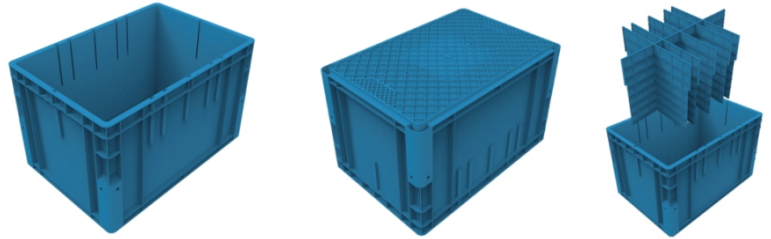


TK6444-31C

- External Size: 640×440×310mm
- Internal Size: 604×404×300mm
- Load Capacity: ≤30kg
- Volume: 46L
- Material: High Impact PP
- Stacking Load: ≤150kg

TK6544-40

- External Size: 650×440×400mm
- Internal Size: 615×405×390mm
- Load Capacity: ≤30kg
- Volume: 90L
- Material: High Impact PP
- Stacking Load: ≤150kg

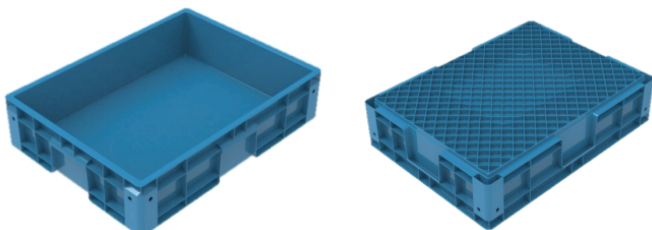


TK6545-37

- External Size: 650×450×370mm
- Internal Size: 620×420×353mm
- Load Capacity: ≤40kg
- Volume: 90L
- Material: High Impact PP
- Stacking Load: ≤200kg

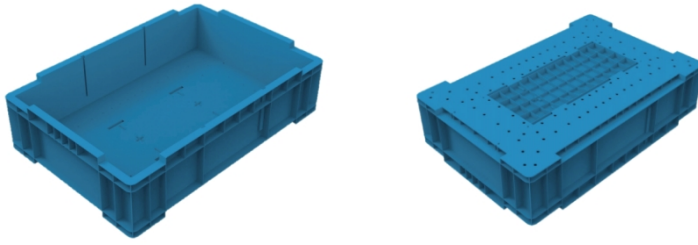
TK6550-20B

- External Size: 650×500×200mm
- Internal Size: 620×465×183mm
- Load Capacity: ≤50kg
- Volume: 52L
- Material: High Impact PP
- Stacking Load: ≤250kg



TK7557-18C

- External Size: 755×570×180mm
- Internal Size: 705×520×162mm
- Load Capacity: ≤30kg
- Volume: 56L
- Material: High Impact PP
- Stacking Load: ≤150kg

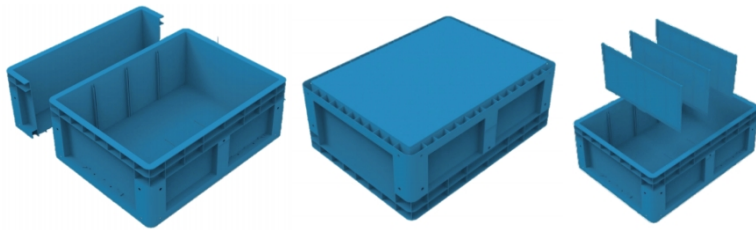
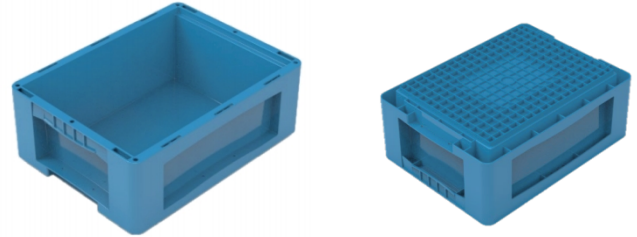


TK1208-03

- External Size: 1200×800×300mm
- Volume: 214L
- Internal Size: 1130×730×267mm
- Material: High Impact PP
- Load Capacity: ≤75kg
- Stacking Load: ≤300kg

TK4030-15

- External Size: 400×300×150mm
- Volume: 13L
- Internal Size: 350×265×145mm
- Material: High Impact PP
- Load Capacity: ≤25kg
- Stacking Load: ≤125kg

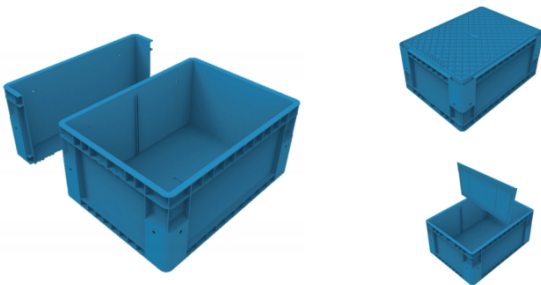


TK8060-30B

- External Size: 800×600×300mm
- Volume: 115L
- Internal Size: 746×546×282mm
- Material: High Impact PP
- Load Capacity: ≤60kg
- Stacking Load: ≤300kg

TK6045-30B

- External Size: 600×450×300mm
- Volume: 64L
- Internal Size: 565×415×281mm
- Material: High Impact PP
- Load Capacity: ≤50kg
- Stacking Load: ≤250kg

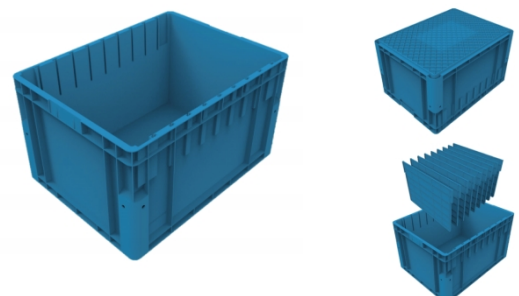


TK6044-28

- External Size: 600×440×280mm
- Volume: 56L
- Internal Size: 564×404×272mm
- Material: High Impact PP
- Load Capacity: ≤30kg
- Stacking Load: ≤150kg

TK6045-35C

- External Size: 600×450×350mm
- Volume: 79L
- Internal Size: 566×416×341mm
- Material: High Impact PP
- Load Capacity: ≤30kg
- Stacking Load: ≤150kg



Attached Lids Boxes



Attached Lids box is widely used in all kinds of distribution centers, such as medical, CVS, tobacco, etc. Also it is widely used in office relocation area. Saving 70% of transportation space when collecting back the boxes from shop to DC is their best highlights comparing with straight wall boxes.

Regular Color: ● ●

Customization:  

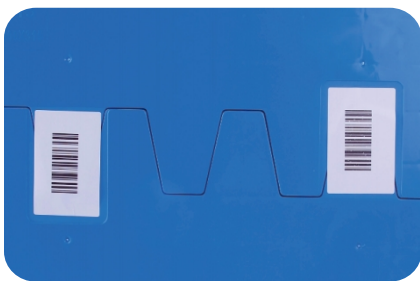
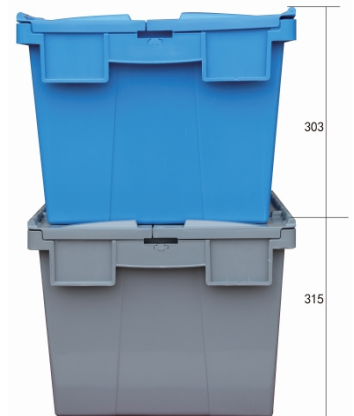
Design Highlights



Label & Barcode Sticking



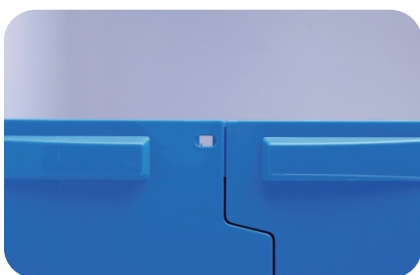
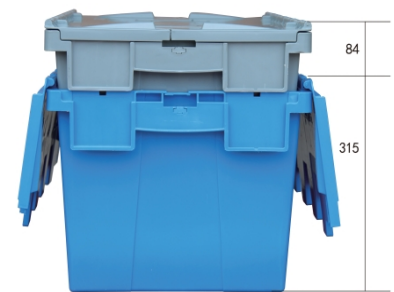
Thicker Ribs to Strengthen Stacking Load



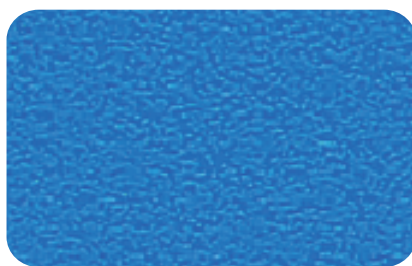
Barcode Sticking



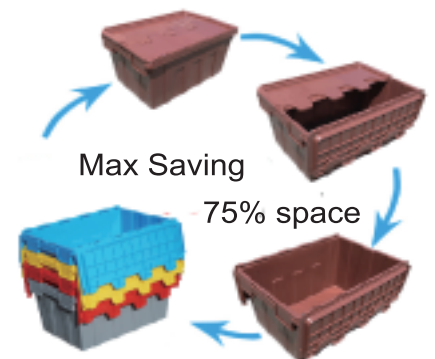
Silk Printing



Locking Design



Corrosive Surface Available for automatic transportation line





TK64315

- External Size: 600×400×315mm
- Top Size: 555×375×295mm
- Bottom Size: 510×330
- Material: High Impact PP
- Load Capacity: ≤40kg
- Stacking Load: ≤200kg



TK64330

- External Size: 600×400×330mm
- Top Size: 555×375×315mm
- Bottom Size: 510×335
- Material: High Impact PP
- Load Capacity: ≤40kg
- Stacking Load: ≤200kg



TK6843

- External Size: 680×430×320mm
- Top Size: 643×395×300mm
- Bottom Size: 595×348
- Material: High Impact PP
- Load Capacity: ≤50kg
- Stacking Load: ≤250kg



TK64265

- External Size: 600×400×265mm
- Top Size: 555×375×250mm
- Bottom Size: 510×335
- Material: High Impact PP
- Load Capacity: ≤30kg
- Stacking Load: ≤150kg



TK64365

- External Size: 600×400×365mm
- Top Size: 555×375×350mm
- Bottom Size: 505×325
- Material: High Impact PP
- Load Capacity: ≤50kg
- Stacking Load: ≤250kg



TK64370

- External Size: 600×400×370mm
- Top Size: 555×375×355mm
- Bottom Size: 510×335
- Material: High Impact PP
- Load Capacity: ≤50kg
- Stacking Load: ≤250kg



TK43260

- External Size: 400×300×260mm
- Top Size: 355×275×245mm
- Bottom Size: 310×235
- Material: High Impact PP
- Load Capacity: ≤25kg
- Stacking Load: ≤125kg

EU Standard Boxes

- Material: Copolypropylene, durable & high impact;
- Work temperature: -25°C to 70°C;
- Various of sizes, suitable for most of the parts;
- Sizes are perfect fitted with 1200*800 & 1200*1000 Euro & China Standard pallet; Forming logistics unitization together with pallet, improving transportation efficiency & reduce the logistic costs.
- EU Standard Boxes are widely used in the whole chain of industrial storage and transportation, especially in auto parts, home appliance parts, electrical parts etc.

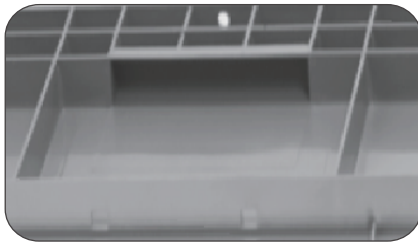
Regular Color: ● ●

Customization:  

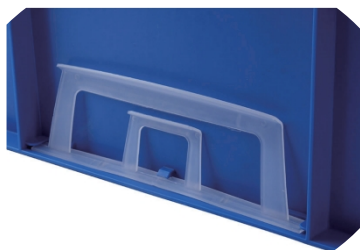


Design Highlights

Ergonomical handle design for easy carrying



Reinforced grid bottom for heavy loading

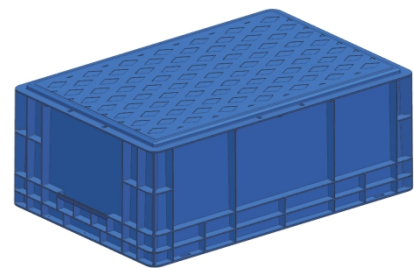
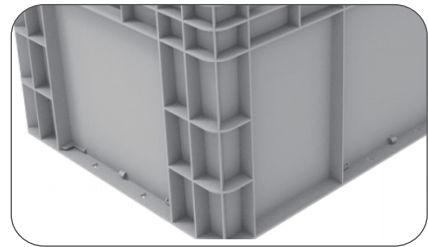


Label holder for Kanban management



Interlocking design for safety stacking

Reinforced ribs for additional strength



Optional texture bottom design for conveying & sorting line



Big area for printing or hot stamping, Easily identify

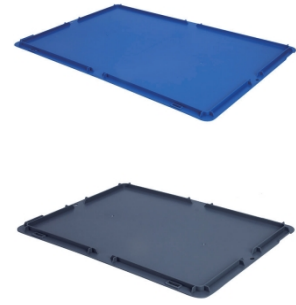
Optional Parts



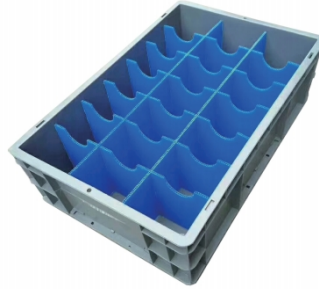
Dividers



Separated Lids



Dustproof



Inlays

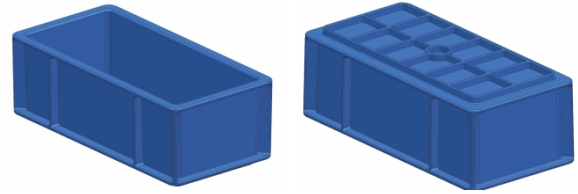
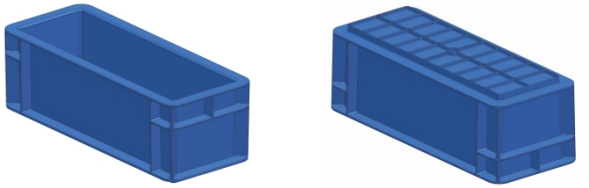


Specification

Model	External Dimension L×W×Hmm	Internal Dimension L×W×Hmm	Load Capacity kg	Stacking Load kg	Internal Volume L	Volume/1000pcs cbm	Bottom Style
EU2311	300×200×120	265×165×110	10	50	4.0	7.2	Grid
EU23148	300×200×148	265×165×140	10	50	5.1	9.0	Grid
EU4311	400×300×120	365×265×110	15	75	9.1	14.1	Grid+Flat
EU43148	400×300×148	365×265×140	15	75	11.8	18.0	Grid+Flat
EU4316	400×300×170	365×265×160	15	75	13.6	20.4	Grid+Flat
EU4322	400×300×230	365×265×220	20	100	19.0	27.6	Grid+Flat
EU4328	400×300×280	365×265×270	20	100	23.5	33.6	Grid+Flat
EU4611	600×400×120	565×365×110	20	100	19.7	26.4	Grid+Flat
EU46148	600×400×148	565×365×140	25	125	25.6	33.6	Grid+Flat
EU4616	600×400×170	565×365×160	25	125	29.6	38.4	Grid+Flat
EU4622	600×400×230	565×365×220	30	150	41.4	52.8	Grid+Flat
EU4628	600×400×280	565×365×270	40	200	51.2	64.8	Grid+Flat
EU4633	600×400×340	565×365×330	40	200	63.0	55.0	Grid+Flat
EU4822	800×400×230	765×365×220	30	150	56.2	73.6	Grid
EU4833	800×400×340	765×365×330	40	200	85.7	109.0	Grid
EU4911	900×400×120	865×365×110	30	150	30.4	43.2	Grid
EU4922	900×400×230	865×365×220	40	200	63.7	83.0	Grid
EU8611	800×600×120	765×565×110	30	150	41.0	57.6	Grid
EU8622	800×600×230	765×565×220	40	200	88.0	110.4	Grid
EU8628	800×600×280	765×565×270	40	200	108.9	135.0	Grid
EU8633	800×600×340	765×565×330	50	250	134.0	163.0	Grid
EU41211	1200×400×120	1165×365×110	30	150	41.0	57.6	Grid
EU41222	1200×400×230	1165×365×220	40	200	90.2	110.5	Grid

EU-K2

- External Size: 150×75×52mm • Internal Size: 138×63×47mm
- Volume: 0.41L • Material: High Impact PP
- Load Capacity: ≤3kg • Stacking Load: ≤15kg



EU31209

- External Size: 300×120×100mm • Internal Size: 272×92×92mm
- Volume: 2.3L • Material: High Impact PP
- Load Capacity: ≤5kg • Stacking Load: ≤25kg

EU2311

- External Size: 300×200×120mm • Internal Size: 265×165×110mm
- Volume: 4.0L • Material: High Impact PP
- Load Capacity: ≤10kg • Stacking Load: ≤50kg



EU23148

- External Size: 300×200×148mm • Internal Size: 265×165×140mm
- Volume: 5.1L • Material: High Impact PP
- Load Capacity: ≤10kg • Stacking Load: ≤50kg

EU4311

- External Size: 400×300×120mm • Internal Size: 365×265×110mm
- Volume: 9.1L • Material: High Impact PP
- Load Capacity: ≤15kg • Stacking Load: ≤75kg



EU43148

- External Size: 400×300×148mm • Internal Size: 365×265×140mm
- Volume: 11.8L • Material: High Impact PP
- Load Capacity: ≤15kg • Stacking Load: ≤75kg

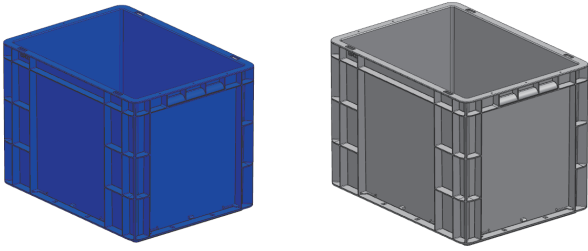
EU4316

- External Size: 400×300×170mm • Internal Size: 365×265×160mm
- Volume: 13.6L • Material: High Impact PP
- Load Capacity: ≤15kg • Stacking Load: ≤75kg



EU4322

- External Size: 400×300×230mm • Internal Size: 365×265×220mm
- Volume: 19.0L • Material: High Impact PP
- Load Capacity: ≤20kg • Stacking Load: ≤100kg



EU4611

- External Size: 600×400×120mm • Internal Size: 565×365×110mm
- Volume: 19.7L • Material: High Impact PP
- Load Capacity: ≤20kg • Stacking Load: ≤100kg



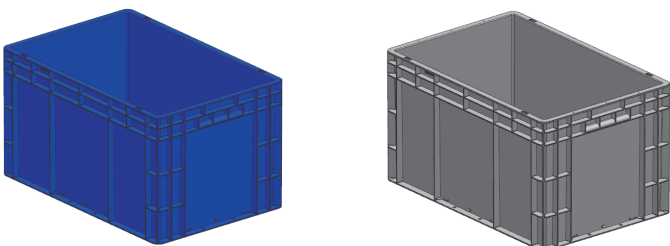
EU4616

- External Size: 600×400×170mm • Internal Size: 565×365×160mm
- Volume: 29.6L • Material: High Impact PP
- Load Capacity: ≤25kg • Stacking Load: ≤125kg



EU4628

- External Size: 600×400×280mm • Internal Size: 565×365×270mm
- Volume: 51.2L • Material: High Impact PP
- Load Capacity: ≤40kg • Stacking Load: ≤200kg



EU4328

- External Size: 400×300×280mm • Internal Size: 365×265×270mm
- Volume: 23.5L • Material: High Impact PP
- Load Capacity: ≤20kg • Stacking Load: ≤100kg



EU46148

- External Size: 600×400×148mm • Internal Size: 565×365×140mm
- Volume: 25.6L • Material: High Impact PP
- Load Capacity: ≤25kg • Stacking Load: ≤125kg



EU4622

- External Size: 600×400×230mm • Internal Size: 565×365×220mm
- Volume: 41.4L • Material: High Impact PP
- Load Capacity: ≤30kg • Stacking Load: ≤150kg



EU4633

- External Size: 600×400×340mm • Internal Size: 565×365×330mm
- Volume: 63.0L • Material: High Impact PP
- Load Capacity: ≤40kg • Stacking Load: ≤200kg

HP Standard Boxes

- Material: Copolymer, durable & high impact;
- Work temperature: -25°C to 70°C;
- Various of sizes, suitable for most of the parts;
- Sizes are perfect fitted with 100*100 Japan & Korea Standard pallet; Forming logistics unitization together with pallet, improving transportation efficiency & reduce the logistic costs.
- HP Standard Boxes are widely used in the whole chain of industrial storage and transportation, especially in auto parts, home appliance parts, electrical parts etc.



Regular Color:



Customization:



Specification

Model	External Dimension (mm)	Internal Dimension (mm)	Volume (L)	Loading (kg)	Stack Load (kg)	Stock Color
HP-3A	365x275x110	325x235x90	7.5	≤15	≤75	Blue/Gray
HP-3B	365x275x160	325x235x140	11.5	≤17	≤85	Blue/Gray
HP-3C	365x275x220	325x235x200	13.5	≤19	≤95	Blue/Gray
HP-4A	435x325x110	390x280x90	11	≤16	≤80	Blue/Gray
HP-4B	435x325x160	390x280x140	16.8	≤20	≤100	Blue/Gray
HP-4C	435x325x210	390x280x190	22.6	≤22	≤110	Blue/Gray
HP-5A	550x365x110	505x320x90	16	≤20	≤80	Blue/Gray
HP-5B	550x365x160	505x320x140	24.6	≤23	≤115	Blue/Gray
HP-5C	550x365x210	505x320x190	33	≤25	≤92	Blue/Gray
HP-5D	550x365x260	505x320x240	41.6	≤27	≤108	Blue/Gray
HP-5E	550x365x330	505x320x310	53.5	≤29	≤116	Blue/Gray
HP-6A	650x435x110	605x390x90	23.4	≤23	≤92	Blue/Gray
HP-6B	650x435x160	605x390x140	35.7	≤25	≤100	Blue/Gray
HP-6C	650x435x210	605x390x190	48	≤27	≤108	Blue/Gray
HP-6D	650x435x260	605x390x246	60.3	≤29	≤116	Blue/Gray
HP-6E	650x435x330	605x390x310	77.5	≤30	≤120	Blue/Gray

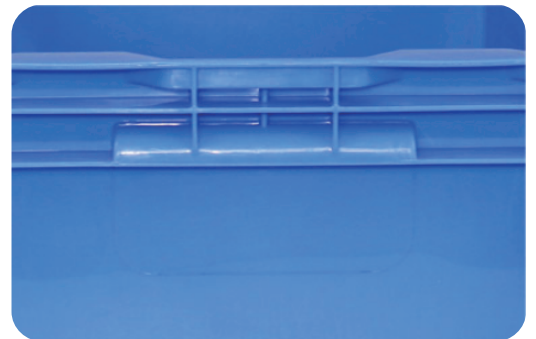
Design Highlights



Reinforced grid bottom for heavy loading



Ergonomical handle design for easy carrying



Label holder for Kanban management



Reinforced ribs for additional strength



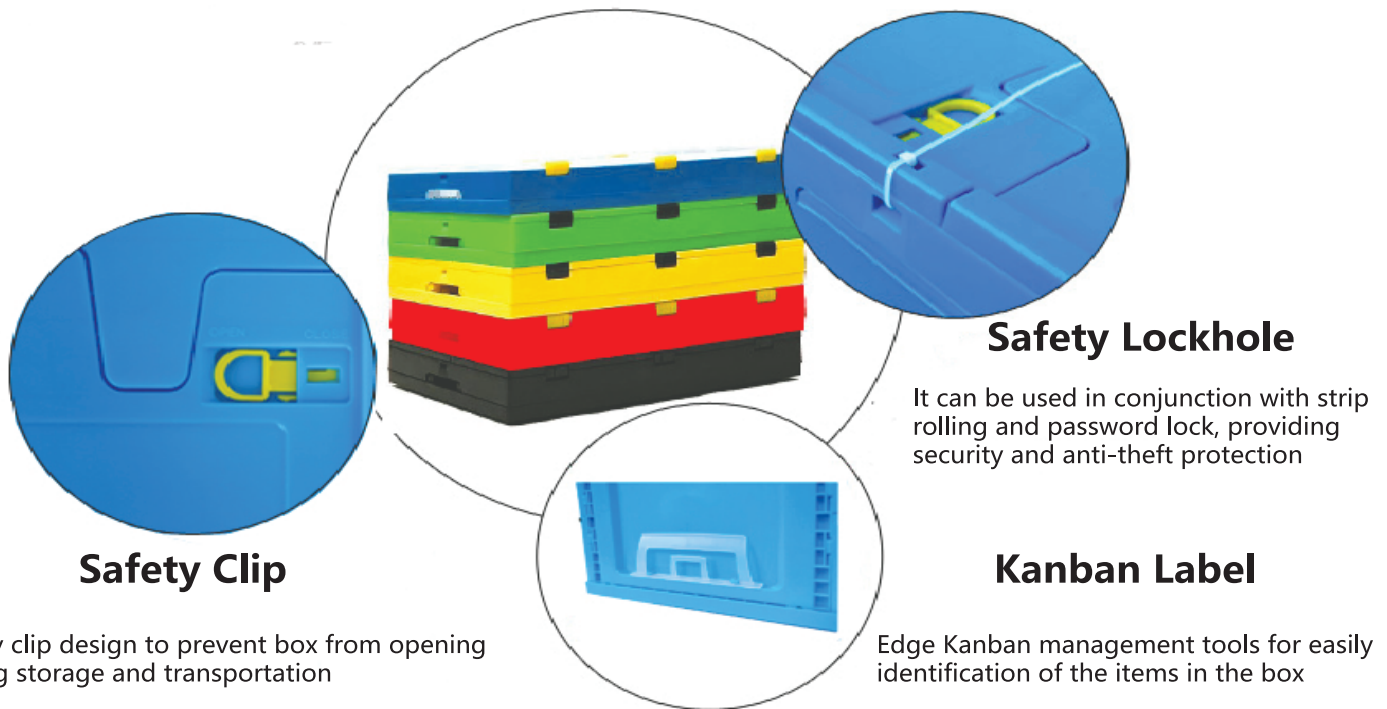
Foldable Storage Boxes

- Material: Copolypropylene, durable & high impact;
- Work temperature: -25°C to 70°C;
- Boxes can be folded when empty to save huge spaces;
- Boxes can be cross stacked during transportation since the modular bottom design, heavily improved the safety and stability of transportation;
- Widely used in different industries such as agriculture, food distribution, auto parts, etc.

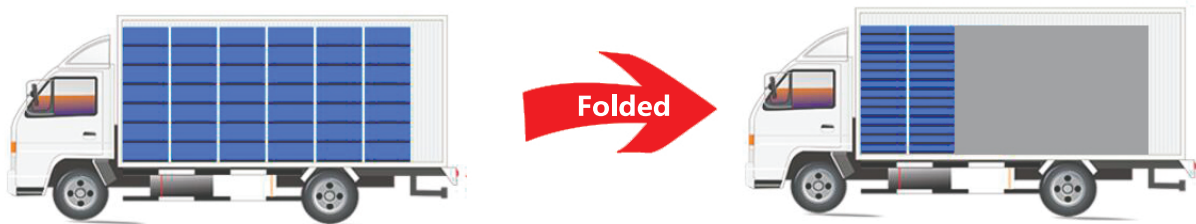


Regular Color: ● Customization:  

Design Highlights



Spaces Saving Instruction



Volume of folded boxes will be around 1/3 or 1/4 of before, different design and height will have a bit difference

Design Highlights



Specification

Solid Wall Model	Vented Wall Model	External Dimension (mm)	Internal Dimension (mm)	Loading (kg)	Stack Load (kg)	Lids Available
ZDX5317	ZDK5317	530x410x170	500x370x160	≤20	≤80	Yes
ZDX5323	ZDK5323	530x410x230	500x370x220	≤20	≤80	Yes
ZDX5330	ZDK5330	530x410x300	500x370x290	≤20	≤80	Yes
ZDX4617	ZDK4617	600x400x170	560x360x160	≤25	≤100	Yes
ZDX4619	ZDK4619	600x400x190	560x360x180	≤25	≤100	Yes
ZDX4623	ZDK4623	600x400x230	560x360x220	≤25	≤100	Yes
ZDX4625	ZDK4625	600x400x250	560x360x240	≤25	≤100	Yes
ZDX4628	ZDK4628	600x400x280	560x360x270	≤30	≤120	Yes
ZDX4630	ZDK4630	600x400x300	560x360x290	≤30	≤120	Yes
ZDX4634	ZDK4634	600x400x340	560x360x330	≤30	≤120	Yes
ZDX4636	ZDK4636	600x400x360	560x360x350	≤30	≤120	Yes

Application



Stack and Nest Boxes

- Material: Copolypropylene, durable & high impact;
- Work temperature: -25°C to 70°C;
- Boxes can be stacked and then turn around 180° to be nested;
- Widely used in supermarket, CVS, agriculture logistic, fresh food distribution, etc.



Regular Color: ●

Customization: ●



Specification

Model	External Dimension (mm)	Internal Dimension (mm)	Side Wall Type	Loading (kg)	Stack Load (kg)	Stock Color
TK6423K	600x400x230	565x365x225	Vented	≤20	≤80	Green
TK6430K	600x400x300	565x365x295	Vented	≤30	≤120	Green
TK6423X	600x400x230	565x365x225	Solid	≤20	≤80	Green
TK6430X	600x400x300	565x365x295	Solid	≤30	≤120	Green

Design Highlights



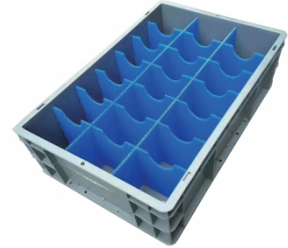
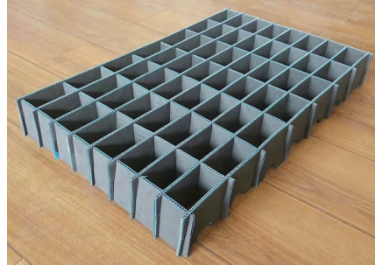
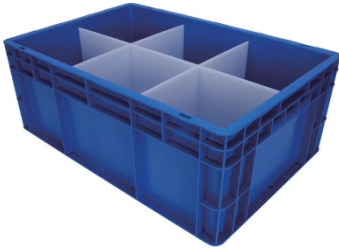
Nested when empty to save space



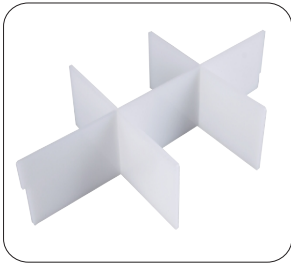
Turn around 180° to stack

Dividers & Inlays

- Dividers and inlays inside the box improved the safe and stability of the items stored during storage and transportation
- Different kind of dividers and inlays available;
- Totally customized service;

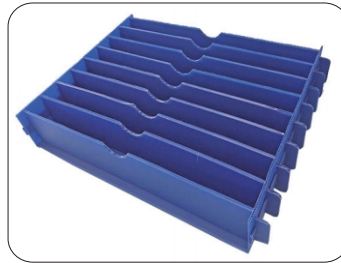


Types of Dividers and Inlays



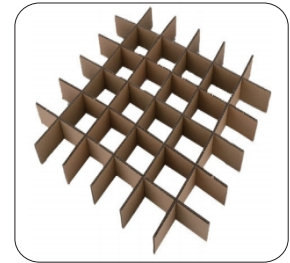
CNC PP Divider

Strength	Flexsible	Service Life	Cost
Strong	Yes	Long	High



Hollow Sheet Divider

Strength	Flexsible	Service Life	Cost
Medium	Yes	Medium	Medium



Cardboard Divider

Strength	Flexsible	Service Life	Cost
Weak	Yes	Short	Low



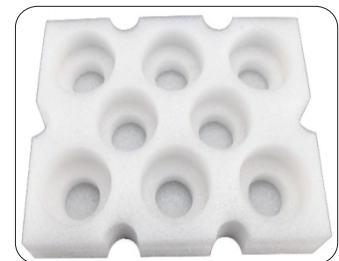
Foam EVA

Waterproof, corrosion-resistant, easy to process, with good cushioning and insulation performance



Suction Molding Inlays

Excellent location limited for the items stored, cost is high and need to make a specific tooling



EPE Inlays

Excellent location limited for the items stored, easily destroyed



Dustproof Curtain

Used for the items stored dustproof during storage and transportation

Durable, moisture-proof, and easily clean

Size can be customized for all kinds of EU Boxes

Dollies for Boxes

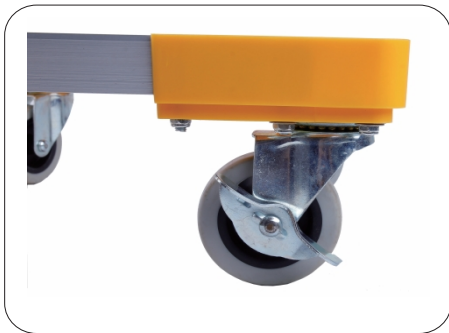


Specification

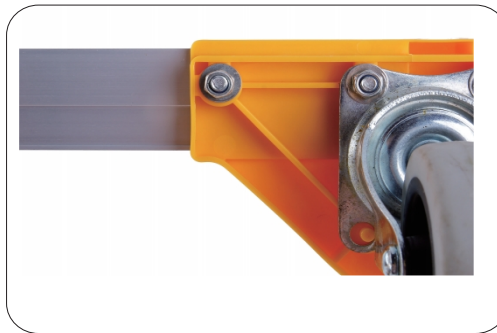
Model	External Dimension (mm)	Internal Dimension (mm)	Height (mm)	UDL Loading (kg)	Castor
TK-WGC4131	430×330	410×310	140	150	3"
TK-WGC6141	630×430	610×410	140	150	3"
TK-WGC5335	550×370	530×350	140	150	3"

* Customized Dimension Available

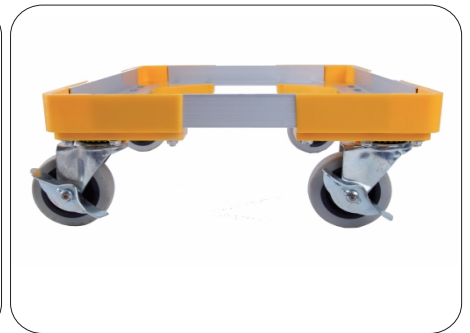
Design Highlights



3" Silent Castors



Anti-stripping Nuts



2 swivels & 2 swivels with brake castors



TK-WGC4030



TK-WGC5335



TK-WGC6040

Hydraulic Box Truck

- The idea is from hand pallet truck, it can easily lift and move the boxes on the ground;
- Fork lift is adjustable to make it suitable for various sizes of boxes
- Widely used in light industry, especially in food industry

Design Highlights



Adjustable fork width to fit with container

Easily Handling

Application



Specification

Model	TK-BYC01	TK-BYC02
Loading	200kg	300kg
Mint Fork Height	7mm	7mm
Max Frok Height	42mm	42mm
Container Height	≤700mm	≤900mm
Container Width	310mm-510mm	380mm-630mm



Stack & Hanging Bins



Application: Aviation & Aerospace, Automobile, Home Appliance, Shipbuilding, Lean Manufacturing, Electronics & E-commerce, Self storage, etc.

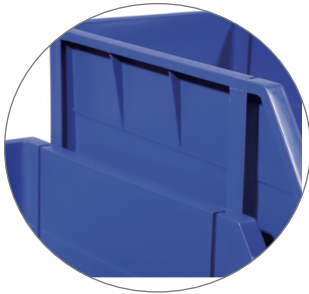
- Features & Functions:**
- Raw material, Eco-friendly
 - Sturdy, Durable & Heavy Loading
 - Hanging & Stacking are both available
 - Semi-open front for easily picking
 - Can be used separately, together with shelf, cabinet ,etc

Regular Color: ● ● ●

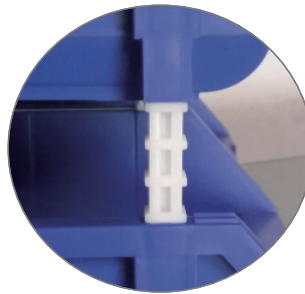
Customization:  

Design Highlights

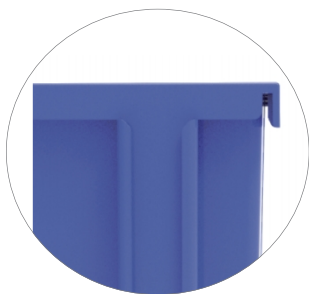
01 Horizontal Connection
Bins can be horizontal connected to improve structural stability



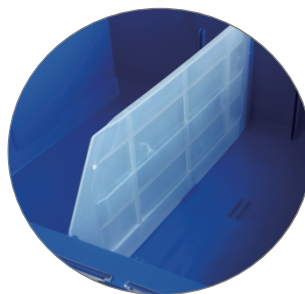
02 Vertical Connection
Bins can be vertical connected with stanchions to extend picking space for improving picking efficiency



03 Hanging Function
Hanging slot design to make the bins can be also used with louvered panel



04 Dividers
Using vertical or horizontal dividers to divide the bins to multiple spaces to store different SKUs



Application

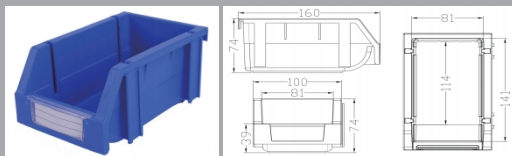


Specification

Model	External Dimension L×W×Hmm	Internal Dimension L×W×Hmm	Loading (kg)	Stack Load(kg)	Stackable	Wall Mounted	Dividers Available
TK001	160×100×74	141×81×39	5	25	√	√	×
TK002	240×150×124	222×128×59	8	40	√	√	×
TK003	340×200×155	317×174×76	15	60	√	√	×
TK004	450×200×177	414×172×94	30	150	√	√	×
TK005	450×300×177	414×272×94	40	200	√	√	×
TK006	600×400×220	550×360×135	50	250	√	×	√
TK007	280×214×175	259×189×94	20	80	√	√	√
TK008	370×214×175	334×189×94	30	150	√	√	√
TK010	370×420×175	334×392×94	35	175	√	√	√
TK011	110×105×50	95×91×26	3	0	×	√	×
TK012	140×105×75	124×91×39	3	0	×	√	×
TK013	190×105×75	174×91×39	3	0	×	√	×
TK014	220×140×125	202×120×61	10	0	×	√	×
TK015	270×140×125	252×120×61	10	0	×	√	×
TK016	300×175×170	282×152×77	15	0	×	√	×

Model Details

TK001



Carton Size: 340*330*235mm

Qty/Ctn: 24

Container Loading

20GP: 1162 Ctns

40HQ: 2636 Ctns

External Dim: 100*160*74mm

Dropping Test:

3m gravity drop test(ISO2248-1985)

Internal Dim: 81*141*70mm

Impact Test:

≥168in/lbs (Gardner)

Loading: 5kg

Color:

Blue,red & yellow/customized available

Stack Loading: 30kg

Material:

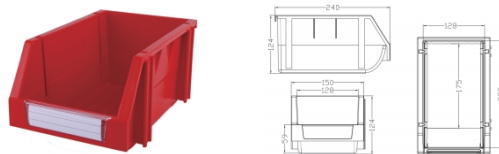
Virgin Impact PP

Hanging Loading: 3kg

Temperature:

-20°C~70°C

TK002



Carton Size: 500*490*560mm

Qty/Ctn: 36

Container Loading

20GP: 176 Ctns

40HQ: 436 Ctns

External Dim: 150*240*124mm

Dropping Test:

3m gravity drop test(ISO2248-1985)

Internal Dim: 128*222*120mm

Impact Test:

≥168in/lbs (Gardner)

Loading: 8kg

Color:

Blue,red & yellow/customized available

Stack Loading: 60kg

Material:

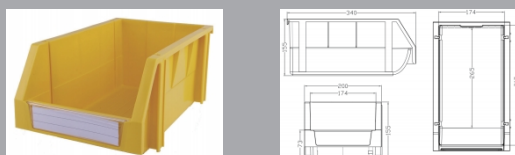
Virgin Impact PP

Hanging Loading: 6kg

Temperature:

-20°C~70°C

TK003



Carton Size: 665*355*690mm

Qty/Ctn: 18

Container Loading

20GP: 177 Ctns

40HQ: 446 Ctns

External Dim: 200*340*155mm

Dropping Test:

3m gravity drop test(ISO2248-1985)

Internal Dim: 174*317*150mm

Impact Test:

≥168in/lbs (Gardner)

Loading: 15kg

Color:

Blue,red & yellow/customized available

Stack Loading: 150kg

Material:

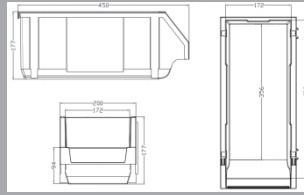
Virgin Impact PP

Hanging Loading: 8kg

Temperature:

-20°C~70°C

TK004



Carton Size: 655*485*560mm

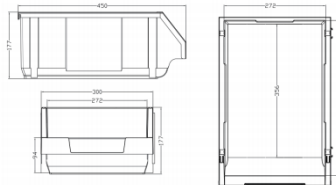
Qty/Ctn: 12

Container Loading

20GP: 168 Ctns 40HQ: 396 Ctns

External Dim:	200*450*177mm	Dropping Test:	3m gravity drop test(ISO2248-1985)
Internal Dim:	172*414*170mm	Impact Test:	≥184in/lbs (Gardner)
Loading:	30kg	Color:	Blue,red & yellow/customized available
Stack Loading:	300kg	Material:	Virgin Impact PP
Hanging Loading:	15kg	Temperature:	-20°C~70°C

TK005



Carton Size: 570*480*530mm

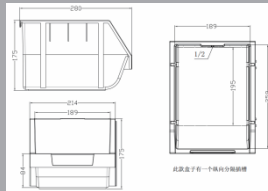
Qty/Ctn: 16

Container Loading

20GP: 192 Ctns 40HQ: 480 Ctns

External Dim:	300*450*177mm	Dropping Test:	3m gravity drop test(ISO2248-1985)
Internal Dim:	272*414*170mm	Impact Test:	≥184in/lbs (Gardner)
Loading:	50kg	Color:	Blue,red & yellow/customized available
Stack Loading:	500kg	Material:	Virgin Impact PP
Hanging Loading:	18kg	Temperature:	-20°C~70°C

TK007



Carton Size: 570*480*530mm

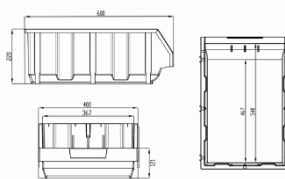
Qty/Ctn: 16

Container Loading

20GP: 192 Ctns 40HQ: 480 Ctns

External Dim:	214*280*175mm	Dropping Test:	3m gravity drop test(ISO2248-1985)
Internal Dim:	189*259*170mm	Impact Test:	≥184in/lbs (Gardner)
Loading:	22kg	Color:	Blue,red & yellow/customized available
Stack Loading:	200kg	Material:	Virgin Impact PP
Hanging Loading:	12kg	Temperature:	-20°C~70°C

TK006



Carton Size: 660×420×565mm

Qty: 4pcs/Carton

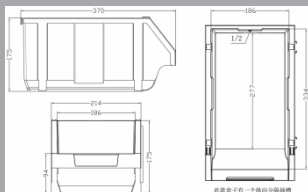
Container Load Qty

20GP: 181 CARTONS, 724pcs

40hq: 425 CARTONS, 1700pcs

External Dim:	600*400*220mm	Dropping Test:	3m gravity dropping test(ISO2248-1985)
Internal Dim:	540*367*210mm	Impact Test:	≥168in/lbs (Gardner Impact Test)
Loading:	50kg	Stock Color:	Blue
Stack Loading:	500kg	Material:	Vigin Impact PP
		Work Temp:	-20°C~70°C

TK008



Carton Size: 490*395*555mm

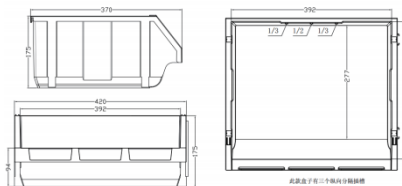
Qty/Ctn: 8

Container Loading

20GP: 304 Ctns 40HQ: 726 Ctns

External Dim:	214*370*175mm	Dropping Test:	3m gravity drop test(ISO2248-1985)
Internal Dim:	186*334*94mm	Impact Test:	≥184in/lbs (Gardner)
Loading:	30kg	Color:	Blue,red & yellow/customized available
Stack Loading:	300kg	Material:	Virgin Impact PP
Hanging Loading:	13kg	Temperature:	-20°C~70°C

TK010



Carton Size: 900*395*550mm

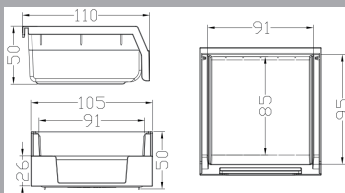
Qty/Ctn: 8

Container Loading

20GP: 168 Ctns 40HQ: 390 Ctns

External Dim:	420*370*175mm	Dropping Test:	3m gravity drop test(ISO2248-1985)
Internal Dim:	392*334*94mm	Impact Test:	≥184in/lbs (Gardner)
Loading:	35kg	Color:	Blue,red & yellow/customized available
Stack Loading:	350kg	Material:	Virgin Impact PP
Hanging Loading:	20kg	Temperature:	-20°C~70°C

TK011



Carton Size: 255*250*190mm

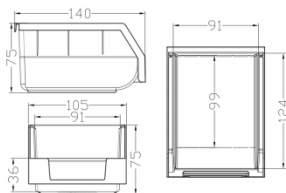
Qty/Ctn: 24

Container Loading

20GP: 2727 Ctns 40HQ: 6483 Ctns

External Dim:	105*110*50mm	Dropping Test:	3m gravity drop test(ISO2248-1985)
Internal Dim:	91*95*46mm	Impact Test:	≥168in/lbs (Gardner)
Loading:	5kg	Color:	Blue,red & yellow/customized available
Hanging Loading:	3kg	Material:	Virgin Impact PP
Volume:	0.2L	Temperature:	-20°C~70°C

TK012



Carton Size: 305*220*280mm

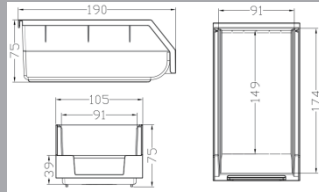
Qty/Ctn: 24

Container Loading

20GP: 1768 Ctns 40HQ: 4140 Ctns

External Dim:	105*140*75mm	Dropping Test:	3m gravity drop test(ISO2248-1985)
Internal Dim:	91*124*70mm	Impact Test:	≥168in/lbs (Gardner)
Loading:	5kg	Color:	Blue,red & yellow/customized available
Hanging Loading:	3kg	Material:	Virgin Impact PP
Volume:	0.4L	Temperature:	-20°C~70°C

TK013



Carton Size: 415*225*260mm

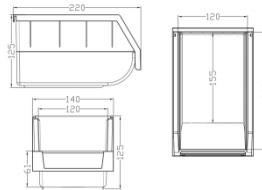
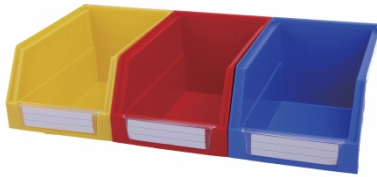
Qty/Ctn: 24

Container Loading

20GP: 1245 Ctns 40HQ: 2908 Ctns

External Dim:	105*190*75mm	Dropping Test:	3m gravity drop test(ISO2248-1985)
Internal Dim:	91*174*70mm	Impact Test:	≥168in/lbs (Gardner)
Loading:	7kg	Color:	Blue,red & yellow/customized available
Hanging Loading:	3kg	Material:	Virgin Impact PP
Volume:	0.6L	Temperature:	-20°C~70°C

TK014



Carton Size: 450*305*250mm

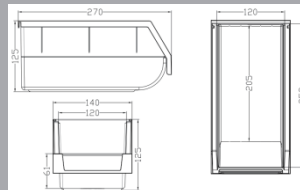
Qty/Ctn:

Container Loading

20GP: 999 Ctns 40HQ: 2367 Ctns

External Dim:	140*220*125mm	Dropping Test:	3m gravity drop test(ISO2248-1985)
Internal Dim:	120*202*120mm	Impact Test:	≥168in/lbs (Gardner)
Loading:	15kg	Color:	Blue,red & yellow/customized available
Hanging Loading:	10kg	Material:	Virgin Impact PP
Volume:	1.5L	Temperature:	-20°C~70°C

TK015



Carton Size: 445*305*290mm

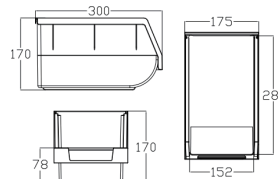
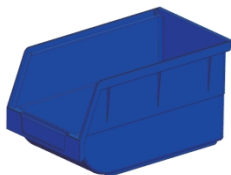
Qty/Ctn: 12

Container Loading

20GP: 812 Ctns 40HQ: 1968 Ctns

External Dim:	140*270*125mm	Dropping Test:	3m gravity drop test(ISO2248-1985)
Internal Dim:	120*252*120mm	Impact Test:	≥168in/lbs (Gardner)
Loading:	18kg	Color:	Blue,red & yellow/customized available
Hanging Loading:	10kg	Material:	Virgin Impact PP
Volume:	1.8L	Temperature:	-20°C~70°C

TK016



Carton Size: 620*490*540mm

Qty/Ctn: 30

Container Loading

20GP: 180 Ctns 40HQ: 436 Ctns

External Dim:	300*175*170mm	Dropping Test:	3m gravity drop test(ISO2248-1985)
Internal Dim:	281*152*165mm	Impact Test:	≥168in/lbs (Gardner)
Loading:	10kg	Color:	Blue,red & yellow/customized available
Hanging Loading:	6kg	Material:	Virgin Impact PP
Volume:	7.0L	Temperature:	-20°C~70°C

Shelf Storage Bins



Shelf Storage Bin is edge tools for spare parts organizing and picking. It is widely used in workshop, hardware shop, E-commerce storage and picking line, etc. Many bright colors help you improving visual management.

Regular Color: ● ● ●

Customization:  

Design Highlights

01 Horizontal Divider

7 horizontal divider slots divide the bins to 1/2,1/3,1/4,1/6



02 Vertical Divider

3 vertical divider slots divide the bins to 1/2,1/3



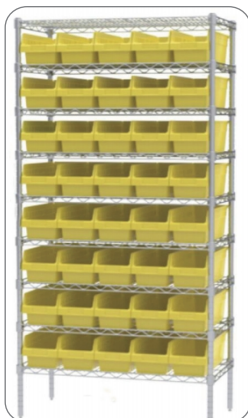
03 Big Label Area

Big label area, barcode or label paper for manual or system control of the bins

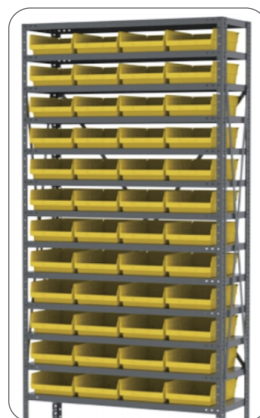


04 Nestable

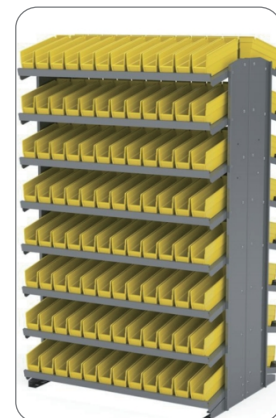
Nestable design, save 40%~65% transportation space.



With Wire Shelving



With Steel Shelving



With Picking Rack

Specification

Model	External Dimension D×W×H (mm)	Internal Dimension D×W×H (mm)	Carton Dimension D×W×H (mm)	Qty/Ctn	Material	Loading
TK3115	300×100×150	280×79×88	610×405×405	40	Virgin Impact PP	≤12kg
TK3215	300×200×150	280×178×88	610×605×405	30	Virgin Impact PP	≤15kg
TK3315	300×300×150	280×277×88	610×605×405	20	Virgin Impact PP	≤20kg
TK3415	300×400×150	280×376×88	610×405×405	10	Virgin Impact PP	≤25kg
TK5215	500×200×150	480×178×88	510×605×405	15	Virgin Impact PP	≤25kg
TK5315	500×300×150	480×277×88	510×605×405	10	Virgin Impact PP	≤25kg
TK5415	500×400×150	480×376×88	510×405×405	5	Virgin Impact PP	≤30kg
TK6215	600×200×150	580×178×88	610×605×405	15	Virgin Impact PP	≤25kg
TK6315	600×300×150	580×277×88	610×605×405	10	Virgin Impact PP	≤30kg
TK6415	600×400×150	580×376×88	610×405×405	5	Virgin Impact PP	≤35kg

Model Details



TK3115

- External Size: 300×100×150mm • Internal Size: 280×79×88mm
- Volume: 1.9L • Material: High Impact PP
- Load Capacity: ≤12kg • 20GP Load Qty: 11120
- Carton Size: 610×405×405 • 40HQ Load Qty: 27040

TK3215

- External Size: 300×200×150mm • Internal Size: 280×178×88mm
- Volume: 4.4L • Material: High Impact PP
- Load Capacity: ≤15kg • 20GP Load Qty: 5580
- Carton Size: 610×605×405 • 40HQ Load Qty: 13710

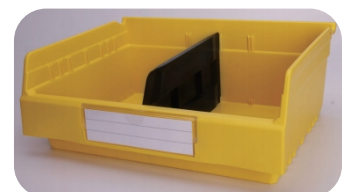


TK3315

- External Size: 300×300×150mm • Internal Size: 280×277×88mm
- Volume: 6.8L • Material: High Impact PP
- Load Capacity: ≤20kg • 20GP Load Qty: 3720
- Carton Size: 610×605×405 • 40HQ Load Qty: 9140

TK3415

- External Size: 300×400×150mm • Internal Size: 280×376×88mm
- Volume: 9.3L • Material: High Impact PP
- Load Capacity: ≤25kg • 20GP Load Qty: 2780
- Carton Size: 610×405×405 • 40HQ Load Qty: 6760



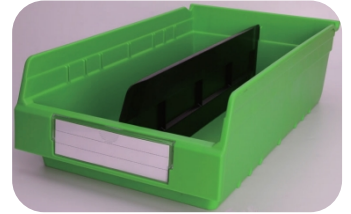
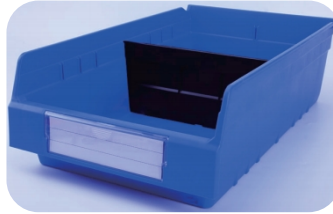


TK5215

- External Size: 500×200×150mm • Internal Size: 480×178×88mm
- Volume: 7.5L • Material: High Impact PP
- Load Capacity: ≤25kg • 20GP Load Qty: 3540
- Carton Size: 510×605×405 • 40HQ Load Qty: 8745

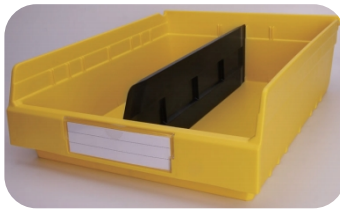
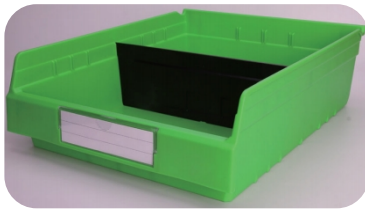
TK5315

- External Size: 500×300×150mm • Internal Size: 480×277×88mm
- Volume: 11.7L • Material: High Impact PP
- Load Capacity: ≤25kg • 20GP Load Qty: 2360
- Carton Size: 510×605×405 • 40HQ Load Qty: 5830



TK5415

- External Size: 500×400×150mm • Internal Size: 480×377×88mm
- Volume: 15.9L • Material: High Impact PP
- Load Capacity: ≤30kg • 20GP Load Qty: 1660
- Carton Size: 510×405×405 • 40HQ Load Qty: 4120



TK6215

- External Size: 600×200×150mm • Internal Size: 580×178×88mm
- Volume: 9.1L • Material: High Impact PP
- Load Capacity: ≤25kg • 20GP Load Qty: 2760
- Carton Size: 610×605×405 • 40HQ Load Qty: 6870



TK6315

- External Size: 600×300×150mm • Internal Size: 580×277×88mm
- Volume: 14.1L • Material: High Impact PP
- Load Capacity: ≤30kg • 20GP Load Qty: 1840
- Carton Size: 610×605×405 • 40HQ Load Qty: 4580



TK6415

- External Size: 600×400×150mm • Internal Size: 580×377×88mm
- Volume: 19.2L • Material: High Impact PP
- Load Capacity: ≤35kg • 20GP Load Qty: 2390
- Carton Size: 610×405×405 • 40HQ Load Qty: 3380



European Shelf Trays



European shelf tray size is an European standard size boxes for spare parts organizing. It is used together with metal shelf to make it to be a drawer bin. Also it can be used in carrousel to organize spare parts. It is widely used in electrical industry, military industry, research institutes, etc.

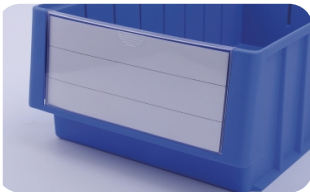
Regular Color: ●

Customization:

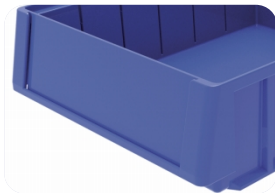


Design Highlights

- 01 **Clear Dust-free Label Cover**
Big label area for more information, beautiful & more practical.



- 03 **Label without using cover**
Special slot design to make sure label is useful without label cover



- 02 **Horizontal Dividers**
Max 11 dividers to improve storage space flexibility



- 04 **Extended Function**
Can be used as a drawer bin when equipped with chromed wire bar and spring



Application



Specification

Model	Volume	External Dimension D×W×H (mm)	Internal Dimension D×W×H (mm)	Carton Dimension D×W×H (mm)	Qty/Ctn	Material	Loading
TK3109	2.0L	300×117×90	262×93×82	610×480×520	48	Virgin Impact PP	≤5kg
TK4109	2.7L	400×117×90	362×93×82	410×480×520	24	Virgin Impact PP	≤10kg
TK5109	3.5L	500×117×90	462×93×82	510×480×520	24	Virgin Impact PP	≤11kg
TK6109	4.3L	600×117×90	562×93×82	610×480×520	24	Virgin Impact PP	≤12kg
TK3209	4.5L	300×234×90	262×210×82	610×480×520	24	Virgin Impact PP	≤10kg
TK4209	6.2L	400×234×90	362×210×82	410×480×520	12	Virgin Impact PP	≤14kg
TK5209	7.9L	500×234×90	462×210×82	510×480×520	12	Virgin Impact PP	≤16kg
TK6209	9.7L	600×234×90	562×210×82	610×480×520	12	Virgin Impact PP	≤18kg
TK3214	7.2L	300×234×140	262×210×132	610×480×550	16	Virgin Impact PP	≤13kg
TK4214	10L	400×234×140	362×210×132	410×480×550	8	Virgin Impact PP	≤16kg
TK5214	12.8L	500×234×140	462×210×132	510×480×550	8	Virgin Impact PP	≤21kg
TK6214	15.6L	600×234×140	562×210×132	610×480×550	8	Virgin Impact PP	≤26kg

Model Details



TK3109

- External Size: 300×117×90mm
- Internal Size: 262×93×82mm
- Volume: 2.0L
- Material: High Impact PP
- Load Capacity: ≤5kg
- 20GP Load Qty: 8832
- Carton Size: 610×480×520
- 40HQ Load Qty: 21888

TK3209

- External Size: 300×234×90mm
- Internal Size: 262×210×82mm
- Volume: 4.5L
- Material: High Impact PP
- Load Capacity: ≤10kg
- 20GP Load Qty: 4416
- Carton Size: 610×480×520
- 40HQ Load Qty: 10944



TK3214

- External Size: 300×234×140mm
- Internal Size: 262×210×132mm
- Volume: 7.2L
- Material: High Impact PP
- Load Capacity: ≤13kg
- 20GP Load Qty: 2928
- Carton Size: 610×480×550
- 40HQ Load Qty: 7168

TK4109

- External Size: 400×117×90mm
- Internal Size: 362×93×82mm
- Volume: 2.7L
- Material: High Impact PP
- Load Capacity: ≤10kg
- 20GP Load Qty: 7008
- Carton Size: 410×480×520
- 40HQ Load Qty: 17184





TK4214

- External Size: 400×234×140mm • Internal Size: 362×210×132mm
- Volume: 10.0L • Material: High Impact PP
- Load Capacity: ≤16kg • 20GP Load Qty: 2216
- Carton Size: 410×480×550 • 40HQ Load Qty: 5448



TK5209

- External Size: 500×234×90mm • Internal Size: 462×210×82mm
- Volume: 7.9L • Material: High Impact PP
- Load Capacity: ≤16kg • 20GP Load Qty: 2304
- Carton Size: 510×480×520 • 40HQ Load Qty: 5760



TK6109

- External Size: 600×117×90mm • Internal Size: 562×93×82mm
- Volume: 4.3L • Material: High Impact PP
- Load Capacity: ≤12kg • 20GP Load Qty: 4416
- Carton Size: 610×480×520 • 40HQ Load Qty: 10944



TK6214

- External Size: 600×234×140mm • Internal Size: 562×210×132mm
- Volume: 15.6L • Material: High Impact PP
- Load Capacity: ≤26kg • 20GP Load Qty: 1464
- Carton Size: 610×480×550 • 40HQ Load Qty: 3584

TK4209

- External Size: 400×234×90mm • Internal Size: 362×210×82mm
- Volume: 6.2L • Material: High Impact PP
- Load Capacity: ≤14kg • 20GP Load Qty: 3504
- Carton Size: 410×480×520 • 40HQ Load Qty: 8592



TK5109

- External Size: 500×117×90mm • Internal Size: 462×93×82mm
- Volume: 3.5L • Material: High Impact PP
- Load Capacity: ≤11kg • 20GP Load Qty: 4608
- Carton Size: 510×480×520 • 40HQ Load Qty: 11520



TK5214

- External Size: 500×234×140mm • Internal Size: 462×210×132mm
- Volume: 12.8L • Material: High Impact PP
- Load Capacity: ≤21kg • 20GP Load Qty: 1536
- Carton Size: 510×480×550 • 40HQ Load Qty: 3840



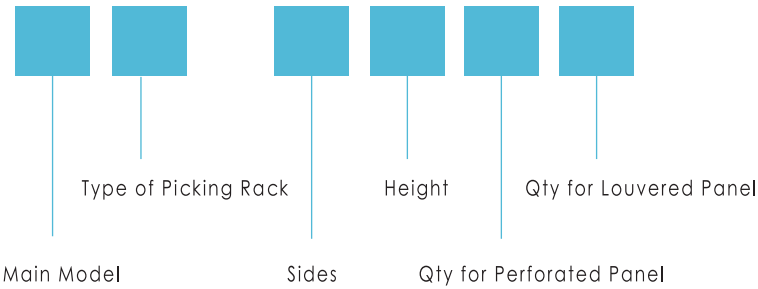
TK6209

- External Size: 600×234×90mm • Internal Size: 562×210×82mm
- Volume: 9.7L • Material: High Impact PP
- Load Capacity: ≤18kg • 20GP Load Qty: 2208
- Carton Size: 610×480×520 • 40HQ Load Qty: 5472



Bin Picking Rack

Picking bin rack using together with bins & metal hools, suitable for different material & tools organization. Assisting workshop and warehouse 5s management, maximize using of space, improving picking efficiency.



- Main Model: K-Picking Bin Rack
- Type of Picking Rack: R-Starter Rack
L-Added Rack
M-Moving
- Sides: 1-Single Side
2-Double Sides
- Height: 2-2 Panels High
3-3 Panels High
4-4 Panels High

Design Highlights



Perforated Panel

Using together with metal hooks to organize tools



Louvered Panel

Using together with bins to organize parts



Handles



Panel assembling

Bins Configuration



Optional bin models



Hanging Bins

TK011,TK012,TK013
TK014, TK015



Stack & Hanging Bins

TK001,TK002,TK003
TK004, TK005,TK007
TK008,TK010

Bins Qty while Full Equipped

Specification

Model	Specification (mm)		Panel Qty	Bins Qty While Full Equipped								
	L	W		H	TK011	TK012	TK013	TK014	TK015	TK007	TK008	TK010
KM-2240	960	610	1110	4	144	144	144	72	72	32	32	16
KM-2360	960	610	1560	6	208	208	208	108	108	48	48	24
KR-1330	970	375	1450	3	104	104	104	54	54	16	16	8
KR-1440	970	375	1910	4	144	144	144	72	72	32	32	16
KR-2360	970	630	1450	6	208	208	208	108	108	48	48	24
KR-2480	970	630	1910	8	288	288	288	144	144	64	64	32
KL-1330	930	375	1450	3	104	104	104	54	54	16	16	8
KL-2360	930	630	1450	6	208	208	208	108	108	48	48	24
KL-1440	930	375	1910	4	144	144	144	72	72	32	32	16
KL-2480	930	630	1910	8	288	288	288	144	144	64	64	32

Bin Cabinet

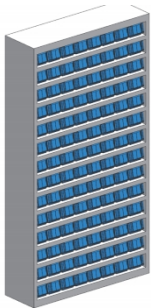
Bin Cabinet is a good storage and picking solution for spare parts. Except the standard size of bin cabinet, we also offer a wide range of customized sizes.

Both Stack storage bins, shelf storage bins and European standard trays can be used inside cabinet to organize spare parts.

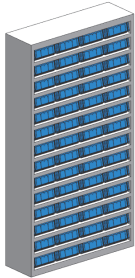
Customized design and size service is available



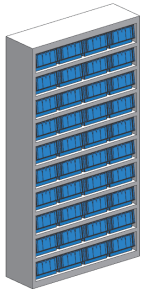
Specification



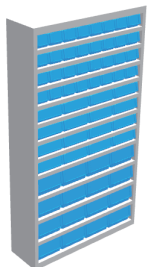
Model	Cabinet Size W × D × H	Levels	Bins Configuration
BC-3109	1000×305×1900	14	TK3109 × 112
BC-4109	1000×405×1900	14	TK4109 × 112
BC-5109	1000×505×1900	14	TK5109 × 112
BC-6109	1000×605×1900	14	TK6109 × 112



Model	Cabinet Size W × D × H	Levels	Bins Configuration
BC-3209	1000×305×1900	14	TK3209 × 56
BC-4209	1000×405×1900	14	TK4209 × 56
BC-5209	1000×505×1900	14	TK5209 × 56
BC-6209	1000×605×1900	14	TK6209 × 56



Model	Cabinet Size W × D × H	Levels	Bins Configuration
BC-3214	1000×305×1880	10	TK3214 × 40
BC-4214	1000×405×1880	10	TK4214 × 40
BC-5214	1000×505×1880	10	TK5214 × 40
BC-6214	1000×605×1880	10	TK6214 × 40



Model	Cabinet Size W × D × H	Levels	Bins Configuration
BC-300M	1000×305×1840	12	TK3109 × 32 TK3209 × 16 TK3214 × 16
BC-400M	1000×405×1840	12	TK4109 × 32 TK4209 × 16 TK4214 × 16
BC-500M	1000×505×1840	12	TK5109 × 32 TK5209 × 16 TK5214 × 16
BC-600M	1000×605×1840	12	TK6109 × 32 TK6209 × 16 TK6214 × 16

Stackable Pallet Boxes



Stackable Pallet Boxes are widely used in agriculture, auto parts and home appliance manufacturing, etc.

Design Highlights



Replaceable bottom runners for easily moving and repair



Drainage hole available



Optional castors available for easily manual handling



Optional lids available for dustproof purpose

Specification



SPB1210-760S

- Wall type: Solid
- External Size: 1200 × 1000 × 760 mm
- Internal Size: 1100 × 910 × 610 mm:
- Forklift Entry: 4
- Forklift Load: 1000 kg
- Static Load: 4000 kg

SPB1210-760S

- Wall type: Solid
- External Size: 1200 × 1000 × 760 mm
- Internal Size: 1100 × 910 × 610 mm:
- Forklift Entry: 4
- Forklift Load: 1000 kg
- Static Load: 4000 kg



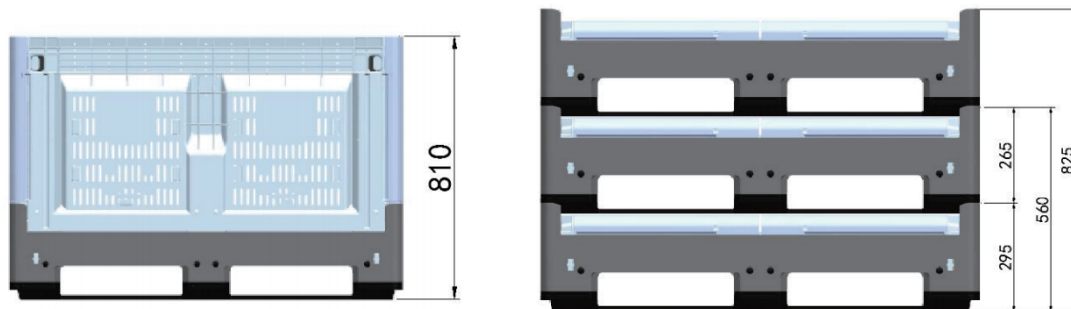
Foldable Pallet Boxes



Foldable Pallet Box is one kind of one-touch logistic solution especially for auto and agriculture industry

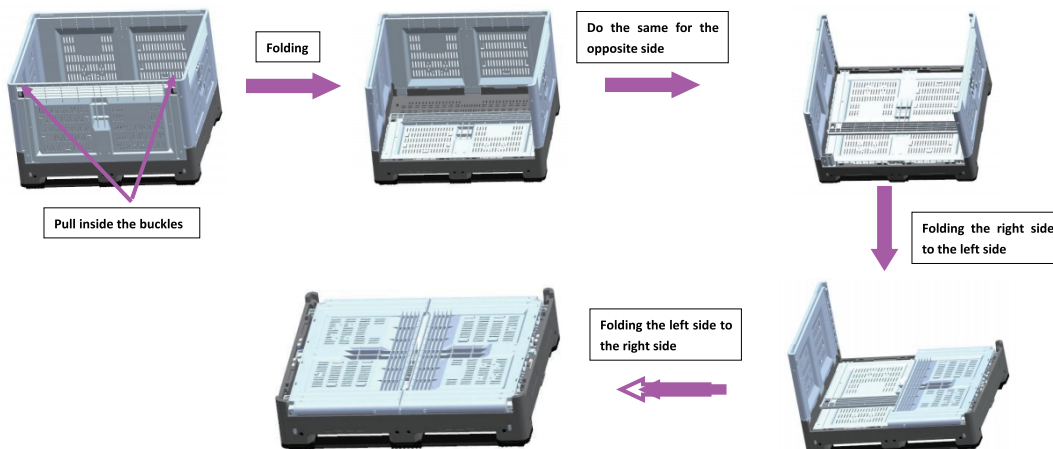
Design Highlights

- Fold-able function: Saving spaces when empty, after folded almost 70% spaces saved.



- Pallet Bottom: Easy for handing by hand truck or forklift, stack-able and convenient for storage.
- Long life: Comparing with wooden box and steel box, service life will be much better.
- Low weight: Comparing with wooden box and steel box, the self weight is lower and easy for moving
- Hygienic & Eco-friendly: Non-toxic, food storage available, easy for cleaning.

Folding Instruction



Specification

Model	External Dim(mm)	Internal Dim(mm)	Folded height mm	Net Weight(kg)	Static Load(t)	Forklift Load(t)	Volume (L)	Side Open Door Available	Bottom Structure
FPB-121059-S	1200*1000*595	1150*915*430	390	47.5	4	1.5	410	NO	3 runners or 9 Feet
FPB-121076-S	1200*1000*760	1120*920*560	390	55	4.5	1.5	577	2 at width side	3 runners or 9 Feet
FPB-121076-V	1200*1000*760	1120*920*580	300	42	4.5	1.5	597	NO	2 runners & 3 Feet
FPB-121076-S1	1200*1000*760	1120*920*580	300	47	4.5	1.5	597	NO	2 runners & 3 Feet
FPB-121081-V	1200*1000*810	1120*920*665	300	46	4.5	1.5	692	2 at width side	2 runners & 3 Feet
FPB-121081-S	1200*1000*810	1120*920*665	300	51	4.5	1.5	692	2 at width side	2 runners & 3 Feet
FPB-121086-S	1200*1000*860	1120*920*660	390	61	4.5	1.5	680	At all sides	3 runners or 9 Feet
FPB-121098-S	1200*1000*980	1120*920*775	390	65	4.5	1.5	833	At all sides	3 runners or 9 Feet

Model Details



Model: FPB-121059-S
 External Dimension: 1200*1000*595mm
 Internal Dimension: 1150*915*430mm
 Folded Dimension: 1200*1000*390mm
 Material: High Impact Co-polypropylene
 Bottom Structure: 3 runners or 9 feet
 Static Load: 4T Forklift Load: 1.5T
 Weight: 47.5KG Volume: 410L

Model: FPB-121076-S
 External Dimension: 1200*1000*760mm
 Internal Dimension: 1120*920*560mm
 Folded Dimension: 1200*1000*390mm
 Material: High Impact Co-polypropylene
 Bottom Structure: 3 runners or 9 feet
 Static Load: 4.5T Forklift Load: 1.5T
 Weight: 55KG Volume: 577L
 Doors are available at the short sides



Model: FPB-121076-V
 External Dimension: 1200*1000*760mm
 Internal Dimension: 1120*920*580mm
 Folded Dimension: 1200*1000*300mm
 Material: High Impact Co-polypropylene
 Bottom Structure: 2 runners plus 3 feet
 Static Load: 4.5T Forklift Load: 1.5T
 Weight: 42KG Volume: 597L

Model: FPB-121076-S1
 External Dimension: 1200*1000*760mm
 Internal Dimension: 1120*920*580mm
 Folded Dimension: 1200*1000*300mm
 Material: High Impact Co-polypropylene
 Bottom Structure: 2 runners plus 3 feet
 Static Load: 4.5T Forklift Load: 1.5T
 Weight: 47 KG Volume: 597L
 20GP Load qty: 40HQ Load qty:



	<p>Folded Dimension: 1200*1000*300mm Material: High Impact Co-polypropylene Bottom Structure: 2 runners plus 3 feet Static Load: 4.5T Forklift Load: 1.5T Weight: 46KG Volume: 692L</p>
<p>Model: FPB-121081-S External Dimension: 1200*1000*810mm Internal Dimension: 1120*920*665mm Folded Dimension: 1200*1000*300mm Material: High Impact Co-polypropylene Bottom Structure: 2 runners plus 3 feet Static Load: 4.5T Forklift Load: 1.5T Weight: 51KG Volume: 692L</p>	
	<p>Model: FPB-121086-S External Dimension: 1200*1000*860mm Internal Dimension: 1120*920*660mm Folded Dimension: 1200*1000*390mm Material: High Impact Co-polypropylene Bottom Structure: 3 runners or 9 feet Static Load: 4.5T Forklift Load: 1.5T Weight: 61KG Volume: 680L Doors are available at all sides</p>
<p>Model: FPB-121098-S External Dimension: 1200*1000*980mm Internal Dimension: 1120*920*775mm Folded Dimension: 1200*1000*390mm Material: High Impact Co-polypropylene Bottom Structure: 3 runners or 9 feet Static Load: 4.5T Forklift Load: 1.5T Weight: 65KG Volume: 833L Doors are available at all sides</p>	
	<p>Lid Dimension: 1210*1010*40mm Lid Weight: 5.5kg Pallet Box Height Increased when with Lid: 20mm</p>

Plastic Pallets



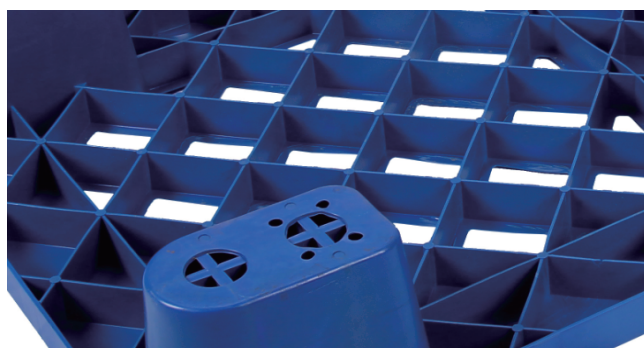
As a basic storage and transportation unit, the plastic pallet is widely used in all kinds of industries. Using together with hand truck, forklift, VGR together, highly improved the efficiency of cargo loading and discharging.

Design Highlights



9 Feet Bottom Design

Saving storage and transportation spaces



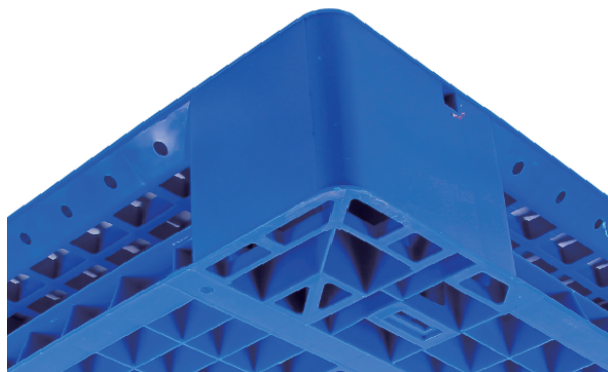
Big Depth Ribs Design

Highly improved pallet loading capacity



Optional Steel Tubes

4 horizontal and 4 vertical optional tubes
Highly improved pallet loading capacity

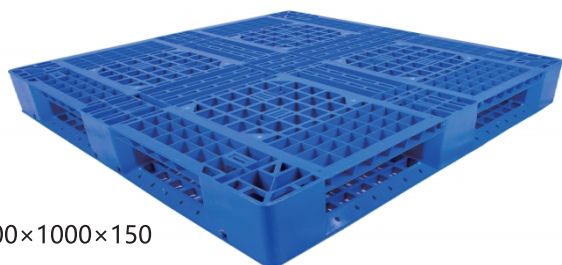


Round Corner Design

Prevent it from destroyed, more safety when something hitted by pallets

Specification

TK1210TW



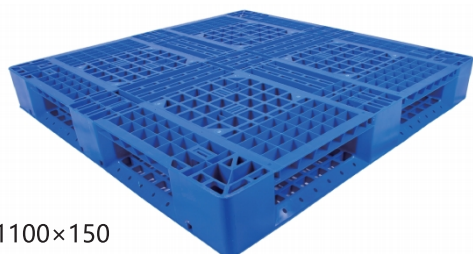
1200×1000×150

TK1210CW



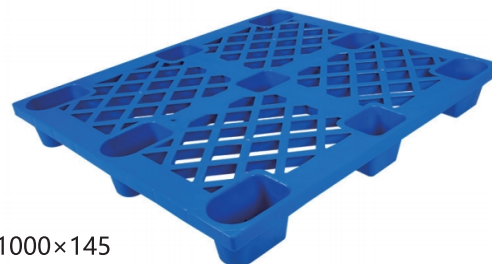
1200×1000×150

TK1111TW



1100×1100×150

TK1210JW



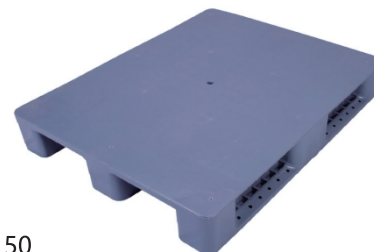
1200×1000×145

TK1111JW

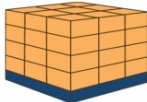




1100×1100×145

TK1008CP



1000×800×150

Type	Model	Size	Steel Tube	Static Load 	Forklift Load 	Rack Load 
3 Runners	TK1210CW	1200*1000*150		4.5T	1.1T	0.5T
3 Runners	TK1210CW-8	1200*1000*150	8	6T	1.5T	1.2T
Cross Runners	TK1210TW	1200*1000*150		4.5T	1.1T	0
Cross Runners	TK1210TW-8	1200*1000*150	8	6T	1.5T	1T
Cross Runners	TK1111TW	1100*1100*150		4.5T	1.1T	0
Cross Runners	TK1111TW-8	1100*1100*150	8	6T	1.5T	1T
9 Feet	TK1210JW	1200*1000*145		1.3T	0.6T	0
9 Feet	TK1111JW	1100*1100*145		1.3T	0.6T	0
3 Runners	TK1008CP	1000*800*150		4T	1T	0.5T



PLACE THE GLOBE IN ORDER



Wechat



WhatsApp

Qingdao Inorder Storage Equipment Co.,Ltd.

Add: 8 Xiaohancun Industrial Park, Jimo, Qingdao, China

Tel: +86-532-84677702

Website: <http://www.inorderstorage.com>

E-mail: sales@inorderstorage.com